



SAILING INSTRUCTIONS WOMEN'S REGATTA AUGUST 13, 2025

ORGANIZING AUTHORITY (OA)

Nantucket Race Week, L.L.C.

Regatta website www.nantucketraceweek.org

HOSTS

The Nantucket Yacht Club (NYC), Great Harbor Yacht Club (GHYC), Nantucket Community Sailing (NCS), and the Nantucket Race Week Committee (NRW).

Nantucket Race Week merchandise and gear is available for customization and order online at the [NCS Store](#) and can be picked up daily during Nantucket Race Week, or prior by arrangement, at the Nantucket Community Sailing office at 4 Winter Street.

THANK YOU TO OUR SPONSORS!





SAILING INSTRUCTIONS
WOMEN'S REGATTA
A Part of Nantucket Race Week
August 13, 2025

1. RULES

- 1.1. The Regatta will be governed by the rules as defined by The Racing Rules of Sailing.
- 1.2. US Sailing Prescriptions will apply.
- 1.3. Appendix V1, PENALTY AT THE TIME OF AN INCIDENT will apply.

2. CHANGES TO THE SAILING INSTRUCTIONS

- 2.1. Any changes to the Sailing Instructions will be posted at least 2 hours prior to the first warning signal on the Official Notice Board or verbally by the signal vessel prior to the warning signal.
- 2.2. The race committee may make changes on the water to the Sailing Instructions by hail to each boat before the warning signal.

3. COMMUNICATION WITH COMPETITORS

- 3.1. The Official Notice Board is online at www.nantucketraceweek.org.
- 3.2. On the water, the Race Committee intends to monitor and communicate with competitors on VHF channel 74. Frequency congestion may require the designation of an alternate channel, which information will be communicated to all competitors.

4. SIGNALS MADE ASHORE

- 4.1. Signals made ashore will be displayed from the flagpole at the NYC.
- 4.2. When flag AP is displayed ashore, '1 minute' is changed to 'a time to be determined by the Race Committee' in Race Signal AP.

5. SCHEDULE

- 5.1. The competitors meeting will be at 1030 on the NYC patio.
- 5.2. The first warning signal will be at 1230.
- 5.3. Multiple races are planned.
- 5.4. No warning signal will be made later than 1500.

6. CLASS FLAGS

The class flags will be the ones used for NYC Saturday racing.

7. RACING AREAS

All races will be sailed in Area 2 or Area 3 as in Addendum A.

8. COURSES

The courses to be sailed are shown in Addendum B, including the approximate angles between legs and the order in which marks are to be passed. The courses will be displayed on a white board.

9. MARKS

- 9.1. Marks 1, 2, and 3 will be colored inflatables.
- 9.2. The starting and finishing marks will be a yellow inflatable and a race committee vessel.
- 9.3. The Herreshoff-12 ½ mark 1a will be a red ball.



SAILING INSTRUCTIONS

WOMEN'S REGATTA

A Part of Nantucket Race Week

August 13, 2025

10. THE START

- 10.1. The starting line will be between a staff displaying an orange flag on the signal vessel at the starboard end and the course side of the port end starting mark.
- 10.2. The starting line will be between a staff displaying an orange flag on the signal vessel at the starboard end and the course side of the port end starting mark.
- 10.3. A boat starting later than 5 minutes after her starting signal will be scored Did Not Start. This changes RRS A5.
- 10.4. If any part of a boat's hull is on the course side of the starting line the race committee will attempt to hail, over VHF, the sail numbers of those boats after the starting signal. The failure to hail her number, failure to hear such a hail, and the order and timing of such hails, will not be considered an improper action or omission by the race committee under RRS 61.4(b)(1).

11. CHANGE IN THE NEXT LEG OF THE COURSE

Courses will not be changed during racing although marks may be adjusted without signaling at the previous mark. This changes RRS 33.

12. THE FINISH

The finishing line will be between a staff displaying a blue flag on a race committee vessel and the course side of the finishing mark.

13. PENALTY SYSTEM

- 13.1. When PFDs are required the Turns penalties of RRS V1 are replaced by the Scoring Penalty of RRS 44.3.
- 13.2. After starting and before finishing, the starting and finishing lines are obstructions, and boats are prohibited from sailing through them. Boats may not correct this error and will be disqualified without a hearing. This changes RRS 28 and A5.

14. TIME LIMIT

- 14.1. The time limit for the first boat to sail the course and finish will be 45 minutes.
- 14.2. Boats still racing more than 10 minutes after the first boat sails the course and finishes will be scored Did Not Finish without a hearing. This changes RRS 35, A4 and A5.

15. PROTESTS AND REDRESS

- 15.1. If a boat intends to protest another boat or request redress, it is requested that the boat notify the race committee by VHF radion of that intention after finishing.
- 15.2. Protest forms are available from the Protest Desk.
- 15.3. Protests shall be delivered within 60 minutes after the race committee finish vessel docks. The time will be posted.
- 15.4. Hearings will be held as soon as possible.
- 15.5. The location of the Protest Desk and Protest Hearings will be announced at the Competitors Meeting along with any restrictions or regulations.

16. SAFETY

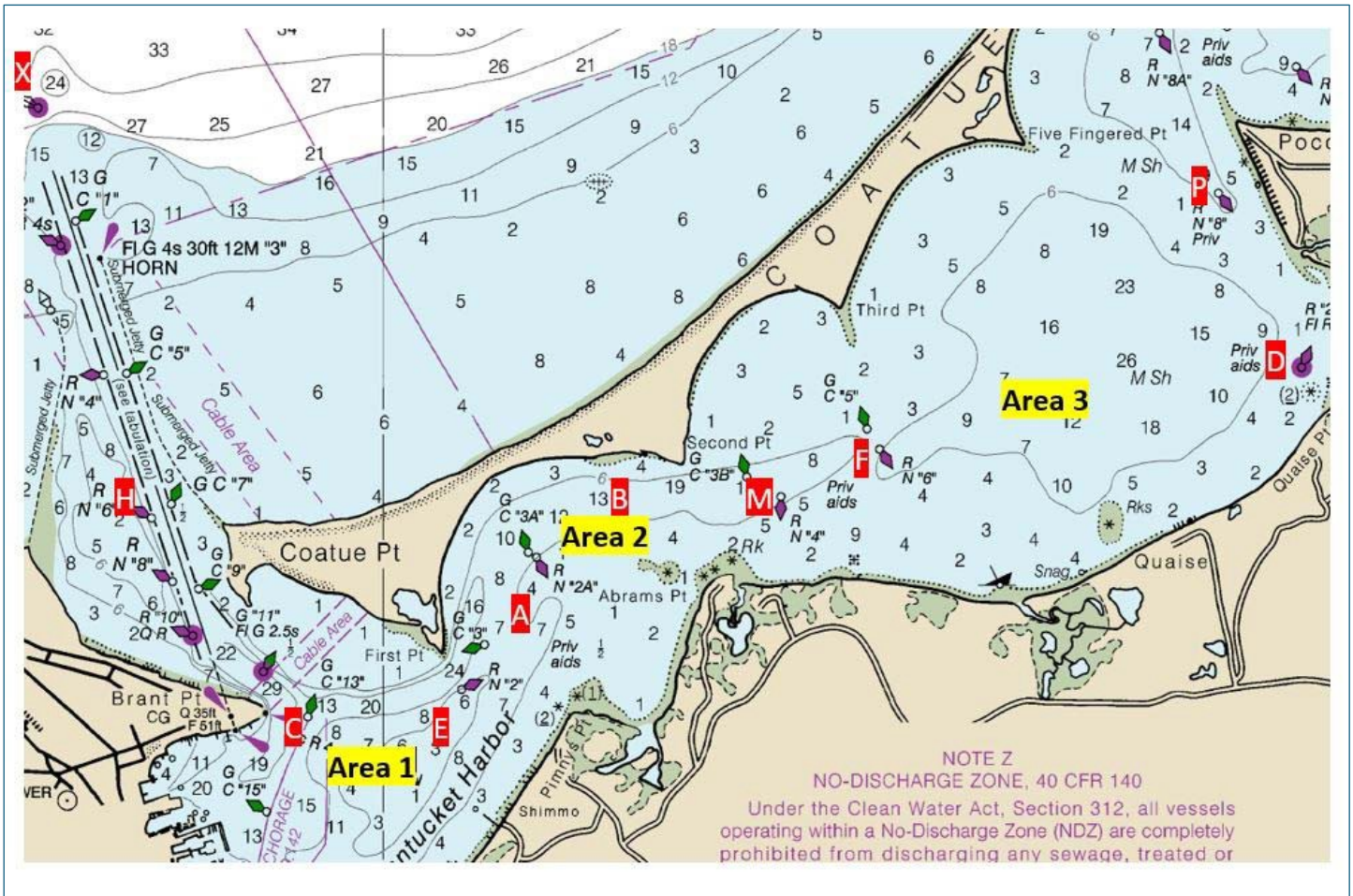
- 16.1. All boats shall check-in with the race committee before the start of the first race by sailing past the signal vessel on starboard tack and hailing their sail number and receiving confirmation from the race committee.



SAILING INSTRUCTIONS
WOMEN'S REGATTA
A Part of Nantucket Race Week
August 13, 2025

16.2. A boat that retires from the racing area shall notify the race committee as soon as possible.

Addendum A - Racing Areas



Addendum B – Courses

WL2	TWL
Rhodes-19: Start, 1 (port), 3 (port), 1 (port), 3 (port), finish H 12 ½: Start, 1a (port), 3 (port), 1a (port), 3 (port), finish	Rhodes-19: Start, 1 (port), 2 (port), 3 (port), 1 (port), 3 (port), finish H 12 ½: Start, 1a (port), 2 (port), 3 (port), 1a (port), 3 (port), finish
COURSE WL1 Rhodes-19: Start, 1 (port), 3 (port), finish H 12 ½: Start, 1a (port), 3 (port), finish	NOTE FOR ALL COURSES: The Start/finish line is CLOSED except when starting or finishing per SI 11.2.