



A Part of Nantucket Race Week

August 15-16, 2025

SAILING INSTRUCTIONS

ORGANIZING AUTHORITY (OA)

Nantucket Race Week, L.L.C.

Regatta website www.nantucketraceweek.org

HOSTS

The Nantucket Yacht Club (NYC), Great Harbor Yacht Club (GHYC), Nantucket Community Sailing (NCS), the Nantucket Race Week Committee (NRW), and the Classic Yacht Owners Association (CYOA). The Nantucket Regatta is part of the CYOA Classic Yachts Challenge Series.

Nantucket Race Week merchandise and gear is available for customization and order online at the [NCS Store](#) and can be picked up daily during Nantucket Race Week, or prior by arrangement, at the Nantucket Community Sailing office at 4 Winter Street.

1. RULES

- 1.1. The Regatta will be governed by the *rules* as defined by *The Racing Rules of Sailing*.
- 1.2. US Sailing Prescriptions will apply, except the US Sailing Prescriptions to (i) the preamble of Part 5, Section B, and, (ii) to RRS 63.1 shall not apply.
- 1.3. The rules of the 2025 CYOA Classic Yachts Challenge Series will apply for boats participating in that Series. Rules may be found at [Classic Yacht Series](#).
- 1.4. RRS 60.4(a)(2) is changed as follows: "(2) if it alleges a breach of a rule of Part 2 or rule 31 and is from a boat that was not involved in, and did not see, the incident, or".
- 1.5. Competitors from outside the U.S. may carry personal flotation devices approved by their nation's certification authority to meet the carriage requirements.
- 1.6. The protest committee may impose penalties less than disqualification [DP], for violation of the class rules and racing rules other than those of RRS Part 1 and Part 2. The notation "[DP]" in a rule in these Sailing Instructions means that the penalty for a breach of that rule may, at the discretion of the protest committee, be less than disqualification

2. CHANGES TO THE SAILING INSTRUCTIONS

Any changes to the Sailing Instructions will be posted by 0830 on the day they will take effect, or within 15 minutes after the termination of any competitors meeting.

3. COMMUNICATIONS

- 3.1. The Official Notice Board is online at www.nantucketraceweek.org.
- 3.2. On the water, the race committee intends to monitor and communicate with competitors on VHF channel 74. Frequency congestion may require the designation of an alternate channel, which information will be communicated to all competitors.

4. SIGNALS MADE ASHORE

- 4.1. Signals made ashore will be displayed from the flagpole at the NYC.
- 4.2. When flag AP is displayed ashore, '1 minute' is changed to 'not less than 60 minutes' in Race Signal AP.

5. SCHEDULE

The first warning signal will be at 1100 on both days.

6. RACING AREAS

All races will be sailed in Nantucket Sound as shown in Addendum A. The racing area and other race committee communication announcements will be announced each day at 0830 and 1000 over VHF Channel 74.

7. COURSES

- 7.1. The courses for Classes One, Two, Three and Four are shown in Addendum B, including the approximate angles between legs and the order in which marks are to be passed.
- 7.2. The Marks for Class Five (Schooner Division) are shown in Addendum C.
- 7.3. Before the warning signal, the race committee will display the course identifier as well as the approximate compass bearing and distance to the first mark. This will also be broadcast over VHF as a courtesy.
- 7.4. Courses for the Schooner class will be posted before 0830 each day and broadcast over VHF at 1000. These courses will include government marks, as described in Addendum C. The race committee finish vessel may be different from the signal vessel.

8. MARKS

Marks for Classes One, Two, Three and Four:

MARK	ORIGINAL MARK DESCRIPTION	CHANGE MARK DESCRIPTION
1	8' yellow Triago tetrahedron	Orange tetrahedron
1A	5' green tetrahedron	Yellow tetrahedron
1B	Yellow West Marine	Yellow West Marine
2/3	8' orange tetrahedron	8' orange tetrahedron
Start	Yellow tetrahedron and RC vessel	
Finish	Green tetrahedradron and RC vessel	

Marks for the Schooner Class:

MARK	LAT	LON	DESCRIPTION
A	41°24.312' N	70°09.795' W	Gov't Buoy Green #1
B	41°26.580' N	70°11.226' W	Gov't Buoy Green #17
C	41°26.202' N	70°05.007' W	Gov't Buoy Green #15
D	41°19.703' N	70°10.310' W	5' Yellow Inflatable Cylinder
FINISH	41°19.760' N	70°05.568' W	Finish Boat (0.9nm, 048°M from NB)

9. CLASS FLAGS

For the first race, classes will start in the following order using the flags indicated for each class. The race committee will display the class flag for the class starting next before its warning signal.

CLASS	CLASSIFICATION	CLASS FLAG	SIGNAL FLAG
One	CRF Spinnaker Division	NP 1	
Two	CRF Non-Spinnaker Division	NP 2	
Three	PHRF Division	NP 3	
Four	J/70 Division	NP 4	
Five	Schooner	NP 5	

10. THE START

- 10.1. The starting line will be between a staff displaying an orange flag on the signal vessel at the starboard end and the course side of the port end starting mark.
- 10.2. Boats whose warning signal has not been made shall keep clear of the starting area.
- 10.3. A boat starting later than 5 minutes after her starting signal will be scored Did Not Start. This changes RRS A5.
- 10.4. If any part of a boat's hull is on the course side of the starting line the race committee will attempt to hail,

over VHF, the sail numbers of those boats after the starting signal. The failure to hail her number, failure to hear such a hail, and the order and timing of such hails, will not be considered an improper action or omission by the race committee under RRS 61.4(b)(1).

11. CHANGE IN THE NEXT LEG OF THE COURSE

To change the next leg of the course, the race committee will lay a new mark (or the finishing line) and remove the original mark as soon as possible. The change will be signaled in accordance with RRS 33, and announced over VHF. When in a subsequent change a new mark is replaced, it will be replaced by an original mark.

12. THE FINISH

The finishing line will be between a staff displaying a blue flag on a race committee vessel and the course side of the finishing mark.

13. TIME LIMIT

- 13.1. The time limit for the first boat in each starting class to sail the course and finish will be 180 minutes.
- 13.2. Boats still racing more than 60 minutes after the first boat in their starting class sails the course and finishes, will be scored Did Not Finish without a hearing. This changes RRS 35, A4 and A5.

14. PROTESTS AND REDRESS

- 14.1. Hearing request forms will be available at the Protest Desk outside the NYC Sail Room.
- 14.2. Protests or requests for redress shall be delivered to the Protest Desk within 60 minutes after the race committee finish vessel personnel come ashore. The time will be posted on the Official Notice Board.
- 14.3. Notices will be posted no later than 30 minutes after the protest time limit to inform competitors of hearings in which they are parties or named as witnesses.
- 14.4. Notices of protests by the race committee, technical committee or protest committee will be posted to inform boats under RRS 60.2(a)(2).
- 14.5. As a courtesy to competitors, protest time limits and notices in SI 14.3 and SI 14.4 may also be posted on a courtesy notice board at Nantucket Yacht Club, but it shall not be the Official Notice Board as described in SI 3.1.
- 14.6. Hearings will be held as soon as possible.

15. SAFETY

- 15.1. All boats shall check-in with the race committee before the start of the first race each day by sailing past the signal vessel "SERENA" on starboard tack and hailing their boat name, sail number, and number of persons on board and receiving confirmation from the race committee. Radio check-in is not valid and will not be acknowledged.
- 15.2. A boat that retires from the racing area shall notify the race committee as soon as possible.

ADDITIONAL INFORMATION

PRINCIPAL RACE OFFICER

Hank Stuart,
International Race Officer
Hstuart8m@gmail.com
585-414-6105

ANCHORAGE

The Nantucket Harbor Master (VHF 14) has asked that any of the Nantucket Regatta fleet anchoring in the harbor anchor within the designated anchoring areas near First Point be well clear of the channel. Anchoring East of First Point is not permitted. To protect the sensitive eel grass beds and shellfish habitat, use only Danforth anchors with ample scope. Please avoid using plow anchors since they do not hold in that area.

NANTUCKET MOORINGS and the **NANTUCKET HARBOR LAUNCH** can be hailed on VHF channel 68. The **NANTUCKET BOAT BASIN** has asked that all vessels hail them on VHF channel 11 when they are departing their slip and returning to their slip, in an effort to control traffic and avoid the possibility of collisions and accidents.

Nantucket Regatta Race Committee Boat SERENA



Serena is a 74' motor yacht built in 1964 by Feadship. Fifty-four years after her launch in the Netherlands, *Serena* left Europe on a ship bound for the United States. It was 2018 and *Serena* was on her way to becoming mothership of a small fleet of historic sailing yachts owned by Matt Brooks and his late wife Pam Rorke Levy. *Serena's* pedigree is one of just seven yachts designed for Feadship by Carlo Riva and her sleek mid-century styling is a natural complement to the fleet's flagship *Dorade*, a 1930 Sparkman & Stephens yawl, and *Lucie*, a 1931 Six-Metre designed by Clinton Crane. *Serena* was acquired after a seven-year search that took Brooks and Levy to boatyards across the U.S. and throughout Europe. They were looking for a motor yacht with an illustrious and colorful history, and considered boats from as far back as the late 1800s.

ATTENTION SAILORS

A REMINDER TO COMPETITORS THAT THE CHANNEL LEADING INTO NANTUCKET HARBOR AND AREAS OF NANTUCKET HARBOR ARE RESTRICTED AND SAILING VESSELS DO NOT HAVE RIGHT OF WAY OVER A VESSEL UNDER POWER WHICH MAY BE RESTRICTED IN HER ABILITY TO MANEUVER.

EMERGENCY PROTOCOL

IN CASE OF EMERGENCY OR INJURY

HAIL YOUR RC on the Course Channel 74

If no RC available, hail **VHF 16** or call **911**

1. PROVIDE DETAILS – “THE 4 P’S”

- **Position** – Give Location – Coordinates – Boat Name
- **People** – How many injured? On board boat?
- **Problem** – Identify – Injury - Severity
- **PFD’S** – Any being worn?

2. DROP SAILS

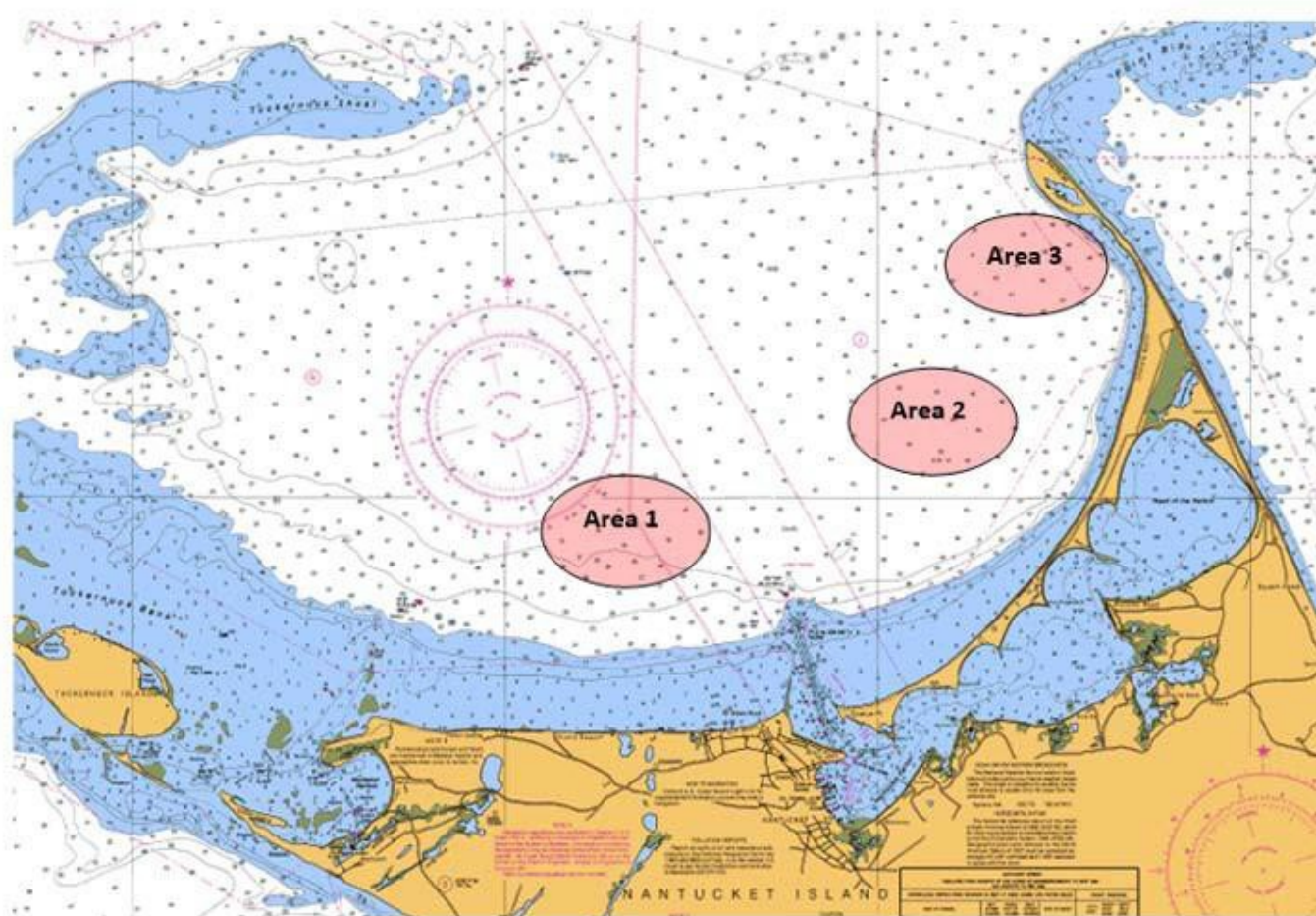
3. TEND TO EMERGENCY – Await Instructions from PRO or First Responder

4. DO NOT MOVE INJURED – Give no pills or fluids

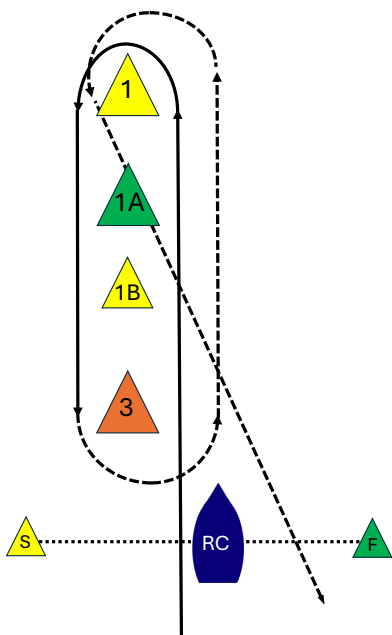
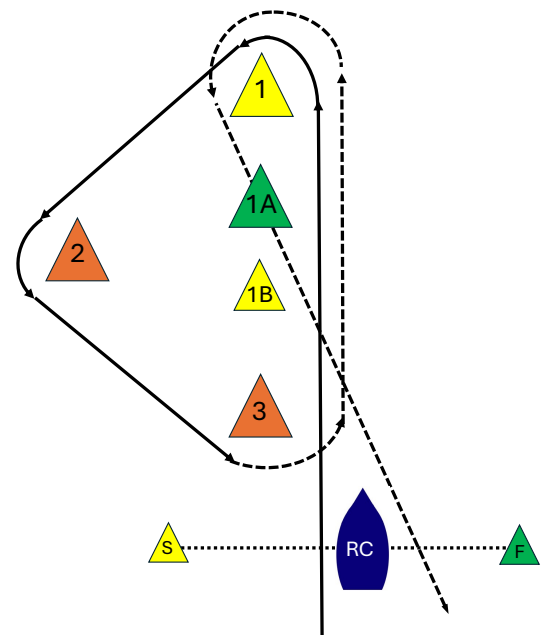
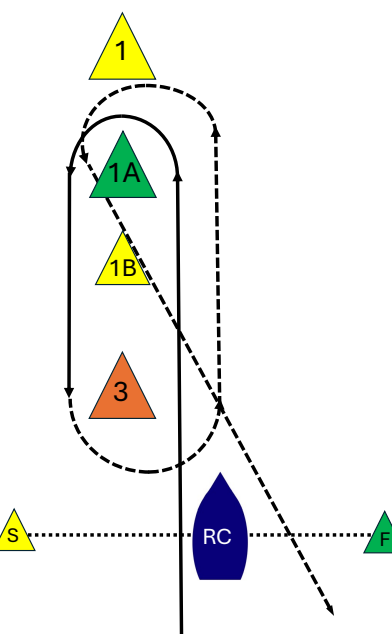
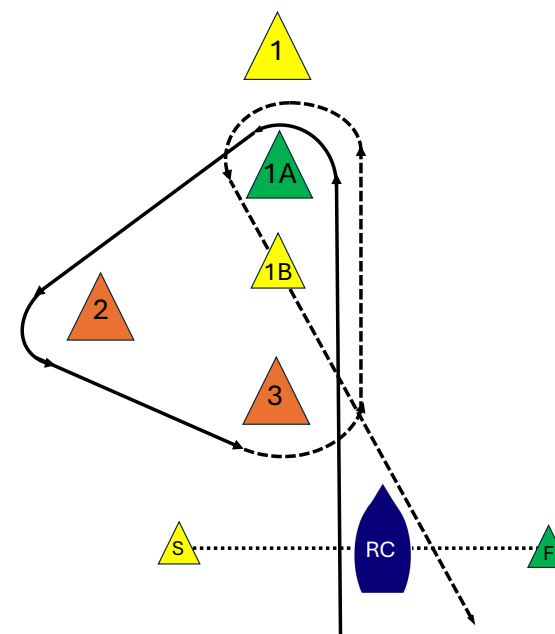
USCG will direct if and where to go ashore

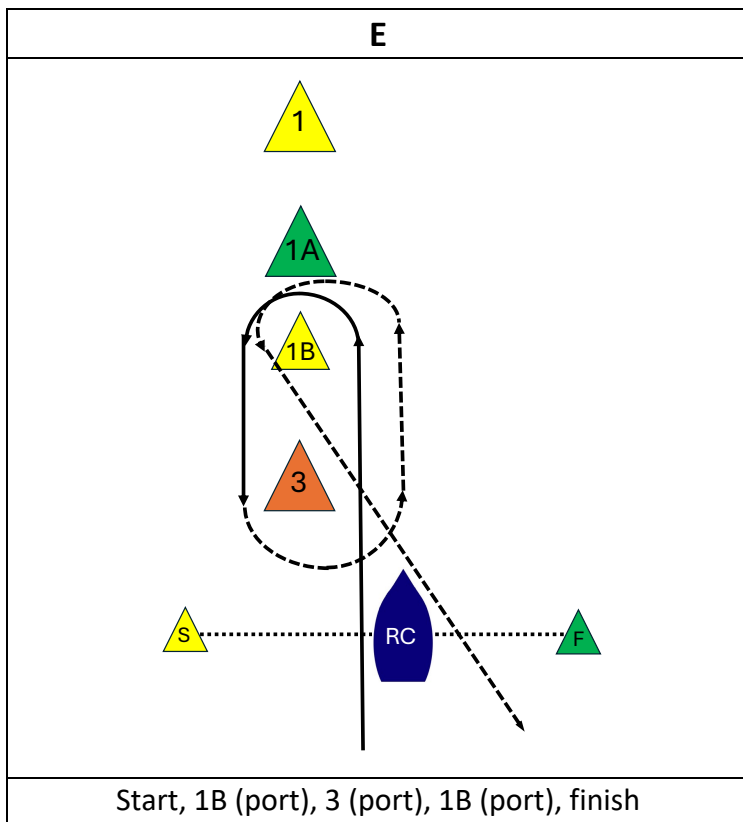
Waterfront AED locations: US Coast Guard Brant Point, NYC, GHYC, Boat Basin, Town Pier.

ADDENDUM A - RACING AREAS



ADDENDUM B – COURSES

A	B
	
Start, 1 (port), 3 (port), 1 (port), finish	Start, 1 (port), 2 (port), 3 (port), 1 (port), finish
C	D
	
Start, 1A (port), 3 (port), 1A (port), finish	Start, 1A (port), 2 (port), 3 (port), 1A (port), finish



ADDENDUM C – SCHOONER DIVISION MARKS

