

The 51st Annual



Presented by



to benefit



Sunday August 20, 2023
Nantucket, Massachusetts USA

SAILING INSTRUCTIONS

Organizing Authority (OA):
Nantucket Community Sailing

Affiliated Organizations:
Nantucket Yacht Club (NYC)
Great Harbor Yacht Club (GHYC)
The Opera House Cup Committee
The Nantucket Race Week Committee
Classic Yacht Owners Association (CYOA)

The Opera House Cup encourages the appreciation, understanding, restoration and celebration of classic wooden boats sailed by amateur crews. It is part of the 2023 CLASSIC YACHTS CHALLENGE SERIES, organized by the CYOA.



1 RULES

- 1.1 The event will be governed by the *rules* as defined in *The Racing Rules of Sailing* (RRS) including Appendix T (Arbitration).
- 1.2 Under World Sailing Test Rule DR21-01, the definition of *Start* is changed as follows:
Start A boat *starts* when her hull having been entirely on the pre-start side of the starting line any part of her hull crosses the starting line from the pre-start side to the course side either:
(a) at or after her starting signal, or
(b) during the last five (5) minutes before her assigned starting time.
When a boat *starts* in accordance with item (b) of the definition *Start*, she shall not return to the pre-start side of the line, and the starting penalty shall be ten (10) minutes added to her elapsed time.

2 CHANGES TO THE SAILING INSTRUCTIONS

Any changes to the sailing instructions will be posted on the Opera House Cup Official Notice Board by 0830 August 20.

3 COMMUNICATIONS

- 3.1 The Official Notice Board is online at www.operahousecup.org.
- 3.2 A notice will be posted on Saturday, August 19 by 1800 listing the three possible courses and each boat's starting time for each course.
- 3.3 On the water, the race committee will make courtesy broadcasts to competitors on VHF radio on channel 74. All competitors shall monitor channel 74 throughout the race.
- 3.4 The course number to be sailed will be announced over VHF starting at 0900, and will be hailed to each boat from the check-in boat.

4 SIGNALS MADE ASHORE

- 4.1 Signals made ashore will be displayed from the flagpole at the NYC.
- 4.2 When flag AP is displayed ashore, RRS Race Signals is changed to replace '1 minute' with 'not less than 60 minutes'.

5 SCHEDULE

All times are in Eastern Daylight Time (EDT).

- | | |
|------|---|
| 0900 | Cannon fire from The Lynx and announcement of course number over VHF |
| 0930 | Parade of Wooden Boats out of Nantucket Harbor |
| 0940 | Rainbow Parade start (please be aware of the smaller boats near Brant Point Lighthouse) |
| 1045 | OHC Warning Signal for 1100 base start |

6 RACING AREA AND MARKS

The racing area and mark locations are shown in Addendum A. NOTE: Mark Z is in a new location this year. There will be a "pink flamingo" inflatable at the edge of the shoal between Mark Z and Great Point indicating the start of shallow water (15 feet). The flamingo is not a race mark and should not be approached.

7 CHECK-IN

There will be a race committee vessel BELLE, a 77' 1929 wooden motor yacht, displaying flags LIMA over ALPHA stationed approximately 0.4 NM East of the Mo (A) RW-NB buoy. Before the first warning signal of the Opera House Cup each boat shall check in by sailing by the stern of the check-in vessel and hailing her name, sail number and the number of people on board. The race committee will acknowledge each boat and confirm the course number. Check in vessel will be on station at 0930.



8 THE START

- 8.1 The starting area will be approximately 0.85 NM @ 030(M) from the Mo (A) RW-NB buoy at the end of the Jetties.
- 8.2 The starting line will be between an orange flag on the signal vessel “SERENA” at the starboard end and the course side of the port end starting mark.
- 8.3 A Pursuit Starting Sequence utilizing GPS time will be used. Each boat will have an assigned starting time calculated using her CRF 2023 Non-Spinnaker rating. This changes RRS 26.
- 8.4 For the 1100 assigned starting time the following sequence will be utilized:

Time	11:00 AM Start	Sound	Flag	Visual	Timing
1045	Warning Signal 11:00 AM Start	1		11:00 AM Start Flag Up	15 minutes to 11:00 AM Start
1056	Prep for 11:00 AM Start	1		Prep flag up	4 minutes
1059	One minute to 11:00 AM Start	1 long		Prep flag down	1 minute
1100	11:00 Start	1		11:00 AM Start flag down	Start for 11:00 AM Start

- 8.5 Boats shall not start more than 10 minutes after their assigned starting time.
- 8.6 If postponement has been signaled, the Race Committee will announce a new base starting time, and display the warning signal 10 minutes prior to that time. All boats shall calculate their new starting time based on the length of the postponement. This also applies if the race is abandoned and re-started.
- 8.7 In accordance with World Sailing Test Rule DR21-01, a boat crossing the starting line during the last five (5) minutes before her assigned starting time shall not return to the prestart side of the line, but will have ten (10) minutes added to her elapsed time.
- 8.8 Boats shall keep clear of the starting area until five minutes prior to their assigned start.

9 THE FINISH

- 9.1 The finishing area will be approximately 0.85 NM @ 030(M) from the Mo (A) RW-NB buoy at the end of the Jetties.
- 9.2 The finishing line will be between the course side of the finishing mark and a staff displaying a blue flag on the finishing vessel.
- 9.3 A boat still racing after 1700 shall record her own finishing time as prescribed by the US Sailing prescription to RRS 34 and report it to Diana Brown at 917-743-5574.
- 9.4 Any boat still racing at 1800 will be given a finish time of 1800. This changes RRS 35.

10 SCORING

- 10.1 The race will be scored using the CRF 2023 Handicap system, with time-on-distance allowances applied to the individual starting times.
- 10.2 If the course is shortened, each boat’s corrected time will be calculated from her assigned starting time and the actual course length.
- 10.3 Results will be posted on the Official Notice Board as soon as possible following the race.

11 RETIRING FROM THE RACE

If a boat retires, she shall notify the race committee on VHF 74. If the race committee does not acknowledge the call, they should attempt to call any auxiliary race committee vessel and request that they pass along the hail or call the RC PRO on cell phone.

12 PROTESTS AND REQUESTS FOR REDRESS

- 12.1 Hearing request forms are available from the Protest Desk outside the NYC Sail Room.
- 12.2 Protests or requests for redress shall be delivered within 60 minutes after the race committee finish vessel personnel come ashore. The time will be posted on the Official Notice Board.
- 12.3 Notices will be posted no later than 30 minutes after the protest time limit to inform competitors

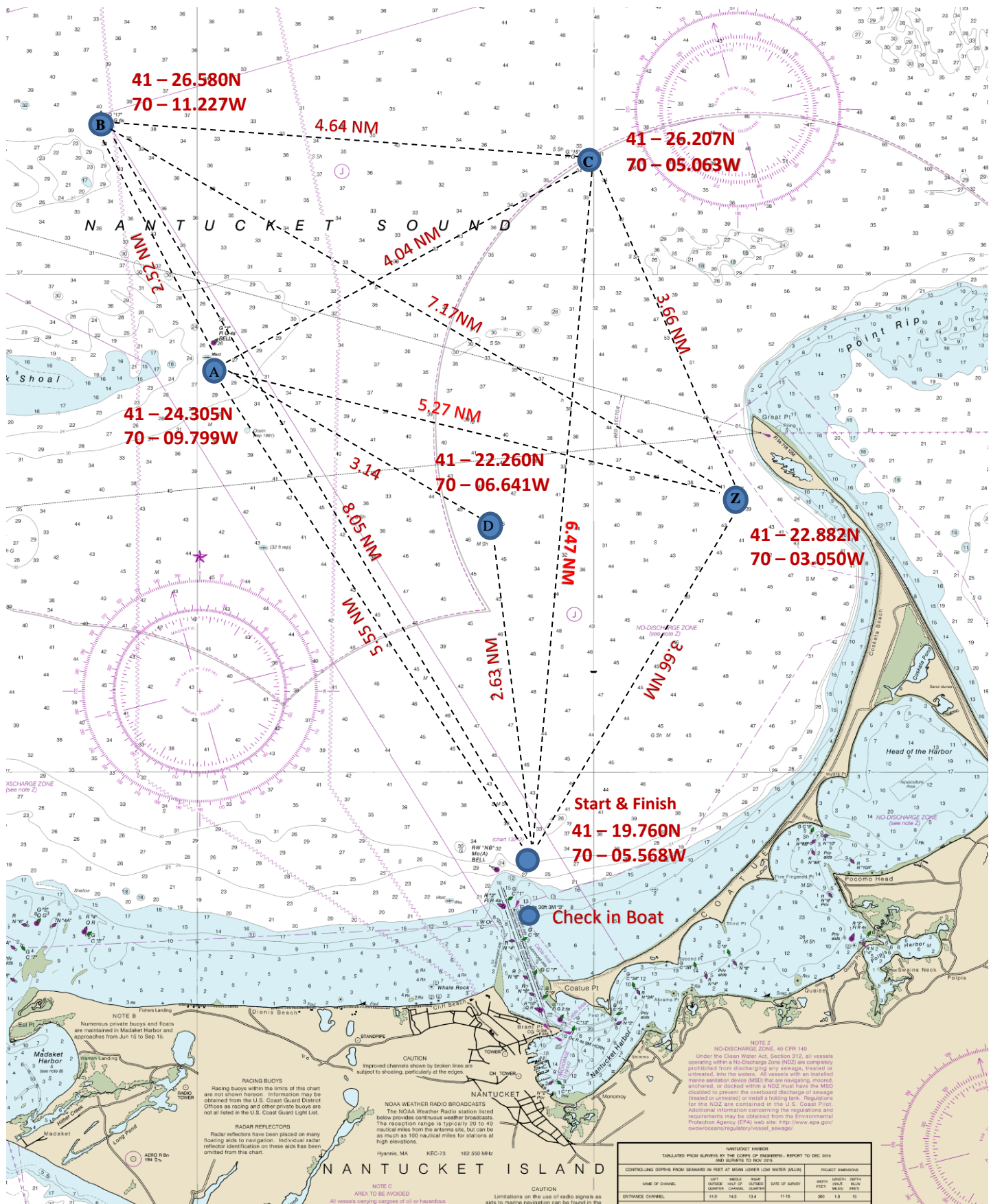


- of hearings in which they are parties or named as witnesses.
- 124 Notices of protests by the race committee, technical committee or protest committee will be posted to inform boats under RRS 61.1(b).
 - 125 A request for redress based on a protest committee decision shall be delivered no later than 30 minutes after the decision was posted. This changes RRS 62.2.
 - 126 Arbitration will be held prior to a protest hearing for incidents involving rules of Part 2 except when RRS 44.1(b) may apply.
 - 127 Hearings will be held as soon as possible.

13 PENALTY SYSTEM

- 131 The Scoring Penalty, RRS 44.3, will apply. RRS 44.3(c) is changed by replacing 20% with 30%. There are no penalty turns.
- 132 As required in 44.3(a) "A boat takes a Scoring Penalty by displaying a yellow flag at the first reasonable opportunity after the incident."
- 133 Boats shall provide their own yellow flag.

ADDENDUM A – RACING AREA AND MARK LOCATIONS



ADDENDUM B - COURSES

Course Number	Marks (rounding)	Approx distance
1	Start, Z(p), C(p), B(p), A(p), Z(s), Finish	23.43 nm
2	Start, C(p), B(p), Z(s), Finish	21.94 nm
3	Start, B(p), C(p), Z(s), Finish	20.01 nm
4	Start, Z(p), C(p), B(p), Finish	20.01 nm
5	Start, C(p), A(p), Z(s), Finish	19.44 nm
6	Start, Z(p), A(s), C(s), Finish	19.44 nm
7	Start, A(s), C(s), Z(s), Finish	16.91 nm
8	Start, Z(p), C(p), A(p), Finish	16.91 nm
9	Start, B(s), Z(s), Finish	18.88 nm
10	Start, Z(p), B(p), Finish	18.88 nm
11	Start, A(s), Z(s), Finish	14.48 nm
12	Start, Z(p), A(p), Finish	14.48 nm
13	Start, C(s), Z(s), Finish	13.79 nm
14	Start, D(p), A(p), Finish	11.32 nm
15	Start, A(s), D(s), Finish	11.32 nm

ATTENTION SAILORS

A REMINDER TO COMPETITORS THAT THE CHANNEL LEADING INTO NANTUCKET HARBOR AND AREAS OF NANTUCKET HARBOR ARE RESTRICTED AND SAILING VESSELS DO NOT HAVE RIGHT OF WAY OVER A VESSEL UNDER POWER WHICH MAY BE RESTRICTED IN HER ABILITY TO MANEUVER.



EMERGENCY PROTOCOL

CHECK-IN

Prior to arriving in the race area, sail by the Race Committee vessel BELLE displaying LIMA over ALPHA and hail your boat name, sail number, and the number of persons on board. See SI 7.

IN CASE OF EMERGENCY OR INJURY

HAIL YOUR RC on the Course Channel

If no RC available, hail **VHF 16** or call **911**

PROVIDE DETAILS – “THE 4 P’S”

Position – Give Location – Coordinates – Boat Name

People – How many injured? On board boat?

Problem – Identify – Injury - Severity

PFD’S – Any being worn?

DROP SAILS

**Tend to Emergency – Await Instructions from PRO
or First Responder**

Do not move injured – Give no pills or fluids

USCG will direct if and where to go ashore

Waterfront AED locations: US Coast Guard Brant Point, NYC,
GHYC, Boat Basin, Town Pier

OPERA HOUSE CUP RACE COMMITTEE BOATS



Serena is a 74' motor yacht built in 1964 by Feadship. Fifty-four years after her launch in the Netherlands, *Serena* was on her way to becoming mothership of a small fleet of historic sailing yachts owned by Matt Brooks and his wife Pam Rorke Levy. *Serena's* sleek mid-century styling is a natural complement to the fleet's flagship *Dorade*, a 1930 Sparkman & Stephens yawl, and *Lucie*, a 1931 Six-Metre designed by Clinton Crane. *Serena* was acquired after a seven-year search that took Brooks and Levy to boatyards across the U.S. and throughout Europe. They were looking for a motor yacht with an illustrious and colorful history and considered boats from as far back as the late 1800s. Thank you to Matt and Pam for donating *Serena* to Nantucket Community Sailing over the past several years.



Belle is a 77 foot, wooden motor yacht built by the New York Yacht, Launch & Engine Company in 1929 and restored in 1998. Thank you to The Westmoor Club for donating *Belle* to Nantucket Community Sailing for the Opera House Cup. She will be the OHC check-in boat.



Mare was conceived as 'the old grey Mare' during her early years as the mothership for the W-Class yachts including *Wild Horses*, *White Wings*, *Equus* and *Mustang*. *Mare* was built by the Wilco Steel Boat Company next to the Brooklyn Navy Yard and launched in 1946 as an "M" boat, a 47' World War II design. Reaching her early 70's, *Mare* was dressed up with black topsides and red bottom paint and is still the mothership. Thank you to Donald Tofias of the W-Class Yacht Company and Sparkman & Stephens for donating *Mare* to Nantucket Community Sailing for the Nantucket Regatta and Opera House Cup.