

SAILING INSTRUCTIONS

12 Metre Regatta

A Part of Nantucket Race Week
August 18-19, 2011

Organized By:

Nantucket Race Week, L.L.C.

And Hosted By: Nantucket Yacht Club (NYC), Great Harbor Yacht Club (GHYC), Nantucket Community Sailing (NCS), and The Nantucket Race Week Committee

1 RULES

- 1.1 The regatta will be governed by the rules as defined in *The Racing Rules of Sailing*.
- 1.2 Part 5, Section B is changed to provide for arbitration of protests of a rule of Part 2.
- 1.3 The following prescriptions of the US national authority will not apply: Prescriptions to Rules 60, 63.2 and 63.4.
- 1.4 If there is a conflict between the Notice of Race and these Sailing Instructions, these Sailing Instructions will prevail. This changes rule 63.7.

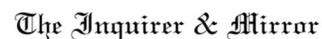
2 NOTICES TO COMPETITORS

Notices to competitors will be posted on the Official Notice Board located in the main entry hall of Nantucket Yacht Club.

3 CHANGES TO SAILING INSTRUCTIONS

Any changes to the sailing instructions will be posted at least 2 hours prior to the affected race(s) or within ½ hour of the termination of the competitors' meeting.

THANK YOU TO OUR SPONSORS



4 SIGNALS MADE ASHORE



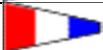

- 4.1 Signals made ashore will be displayed from the flagpole at the Nantucket Yacht Club.
- 4.2 When flag AP is displayed ashore. '1 minute' is replaced with 'not less than 60 minutes' in race signal AP.

5 SCHEDULE OF RACES

- 5.1 The competitors meeting will be at 0830 on Thursday, August 18 at NYC.
- 5.2 The scheduled time of the first warning signal each day is 1100.
- 5.3 Multiple races may be sailed each day.
- 5.4 Four races are scheduled.
- 5.5 No warning signal will be made after 1430 on August 19.

6 CLASS FLAGS

Class flags and order of start for the first race of each day will be:

Boat	Classification	Class Flag	
12 Metre	Grand Prix	Code flag 1	
	Modern	Code flag 2	
	Classic Traditional	Code flag 3	
	Classic Vintage	Code flag 4	

7 RACING AREA

- 7.1 Attachment 1 shows the location of racing areas.
- 7.2 The initial racing area will be posted by 0830 each day and announced on VHF periodically before the first warning signal.

8 COURSES

- 8.1 The diagrams in Attachment 2 show the courses, including the approximate angles between legs, the order in which marks are to be passed and the side on which each mark is to be left.
- 8.2 No later than the warning signal, the race committee will display the course identifier as well as the approximate compass bearing and distance to the first mark.

9 MARKS

- 9.1 The weather and leeward marks will be 8' yellow Tetrahedrons.
- 9.2 Offset marks will be 5' yellow tetrahedrons and the starting mark will be a 5' yellow tetrahedron.
- 9.3 New marks, as provided in Sailing Instruction 11, will be orange inflatable marks.

10 THE START

- 10.1 The starting line will be between a staff displaying an orange flag on the race committee signal boat and the course side of the port-end starting mark.

- 10.2 Boats whose warning signal has not been made shall remain clear of the starting area and of all boats whose warning signal has been made.
- 10.3 After the starting signal, the race committee will attempt to hail on VHF the sail numbers of OCS boats. The failure of any boat to hear the hail and the order of such hails shall not be grounds for granting redress. This changes rules 62.1(a).
- 10.4 A boat starting later than 5 minutes after her starting signal will be scored DNS without a hearing. This changes rules 35, 63.1, A4 and A5

11 CHANGE OF THE NEXT LEG OF THE COURSE

To change the next leg of the course, the race committee will lay a new mark (or move the finishing line) and remove the original mark as soon as practicable. When in a subsequent change a new mark is replaced, it will be replaced by an original mark.

12 THE FINISH

The finish line will be between a staff displaying an orange flag on a race committee boat and the course side of the finishing mark.

13 TIME LIMIT

The time limit for the first boat to sail the course and finish will be 120 minutes. Boats still racing more than 30 minutes after the first boat in her class will be scored DNF without a hearing. This changes rules 35, 63.1, A4 and A5.

14 PENALTY SYSTEM

- 14.1 Rule 44.3, Scoring Penalty, as modified below will apply, for infringements of the rules of Part 2 and rule 31, Touching a Mark. The Penalty will be one place.
- 14.2 In addition to the reporting requirements of rule 44.3(b), a boat accepting a scoring penalty shall file a "Scoring Penalty Acceptance Form." Forms are available at the Nantucket Yacht Club front desk and shall be delivered to the Protest Desk within the protest time limit.
- 14.3 A boat that complies with some but not all of the requirement of 44.3(b) and Sailing Instruction 14.2 will receive a Scoring Penalty of two places without a hearing. This changes rule 63.1.

15 PROTESTS and REQUESTS FOR REDRESS

- 15.1 Protest forms are available at the Nantucket Yacht Club front desk.
- 15.2 Protests shall be delivered to the Protest Desk within 60 minutes after the race committee's finish boat docks. The protest time limit and a list of protests received will be posted on the notice board.

16 ARBITRATION

- 16.1 For protests involving an alleged breach of a rule of Part 2, a short arbitration hearing will be held prior to a protest hearing except that arbitration will not be available for protests where damage is alleged.
- 16.2 One representative from each boat will meet with an arbitrator unless the protestor requests that the protest be withdrawn. No witnesses will be allowed. Protests not resolved by arbitration will be forwarded to the protest committee.

16.3 The arbitrator will not be a member of the protest committee that hears the protest but will be permitted to observe the testimony given to the protest committee and offer testimony. This changes rule 63.3(a).

16.4 Rule 63.1 is changed by adding: "The arbitrator may allow a protest to be withdrawn on behalf of the Protest Committee."

17 SCORING

17.1 The Low Point System in Appendix A will apply, except each boat's series score shall be the total of her race scores with no score excluded.

17.2 One completed race shall constitute a series.

18 SAFETY

18.1 All boats are requested to check in with the race committee either by using VHF or by sailing astern of the signal boat on starboard tack and stating the boat's class and sail number. The race committee will acknowledge by responding with the sail number heard.

18.2 A boat that retires from the racing area shall notify the race committee as soon as possible.

19 RADIO COMMUNICATIONS

19.1 The race committee will use VHF channel 72 to communicate with competitors.

19.2 The race committee may use VHF channel 72 or other channels for working communications. Boats may monitor, but are advised that the race committee communications are unofficial and the use, or lack thereof, of radio communications shall not be grounds for granting redress.

19.3 Except in an emergency, a boat shall neither make radio transmissions while racing nor receive radio communications not available to all boats. This restriction also applies to mobile telephones.

20 OFFICIAL BOATS

Official boats will be flying black Nantucket Race Week flags.

21 INSURANCE

Each participating boat shall be insured with valid third party liability insurance.

22 CLEAN REGATTA

Nantucket Race Week is committed to maintaining Nantucket's clean waters and shores. As such Nantucket Race Week is registered in the Sailors for the Sea's Clean Regattas program. All NRW participants are encouraged to follow the goals and requirements of Clean Regattas.

The requirements include:

- No discharge of treated or untreated sewage or black water in harbor areas or no-discharge zones around Nantucket.
- No overboard discharge of trash or littering at shore facilities (e.g., rigging tape, cigarette butts, beer cans).



NRW 12 Metre Regatta August 18-19, 2011 Sailing Instructions

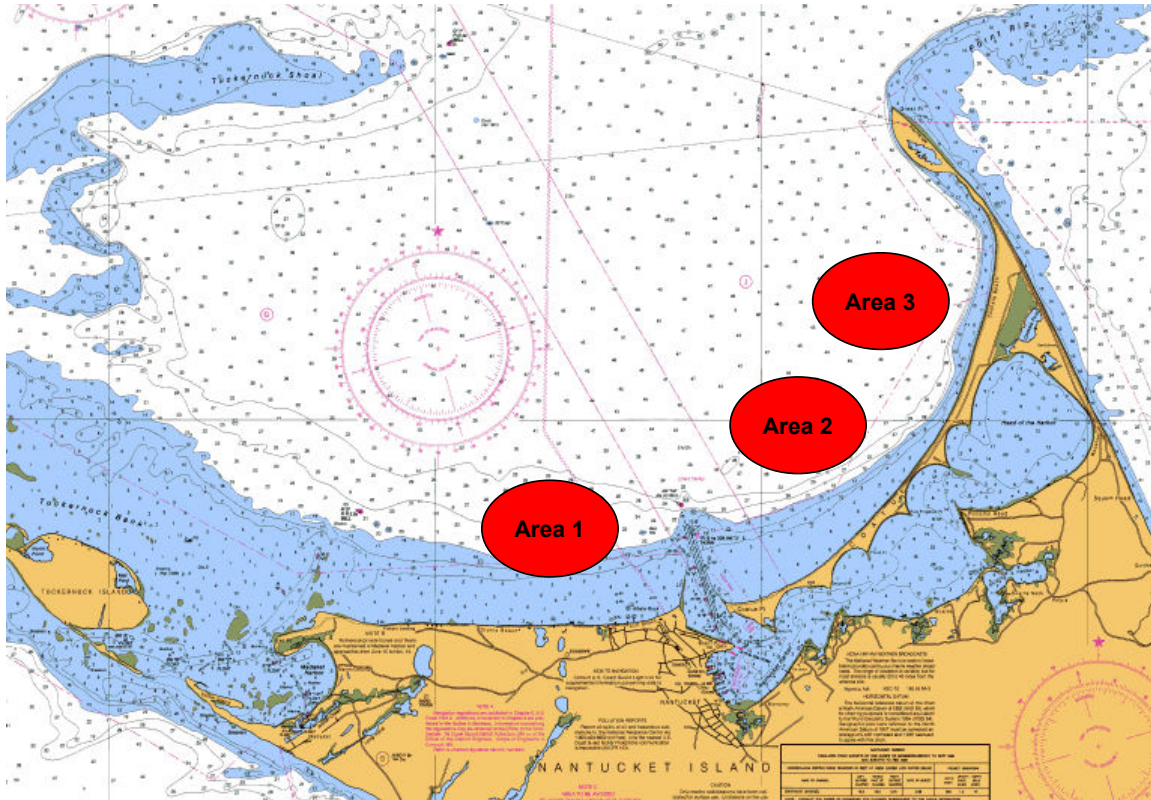
- Follow Nantucket's trash and recycling guidelines: Trash must be in clear plastic or biodegradable bags.
- All paper, glass, metal, and plastic must be recycled and placed in separate containers.
- Reduce plastic waste by using refillable water bottles.
- Use green cleaning and maintenance products.
- Reduce the impact of oil spills from motorized vessels by carrying at least one bilge sponge and fuel spill pad.

23 DISCLAIMER OF LIABILITY

Sailing is an activity that has an inherent risk of damage and injury. Competitors in this event are participating entirely at their own risk. See Rule 4, Decision to Race. The race organizers, Nantucket Race Week LLC, the Nantucket Yacht Club, Great Harbor Yacht Club, Nantucket Community Sailing, race committee, protest committee, volunteers, sponsors, agents, employees, or any other organization or official providing services at the request of any of the foregoing in connection with the events will not be responsible for damage to any boat or other property or the injury to any person sustained as a result of participation in this event. By participating in this event, each competitor (owners, skippers, and crews) agrees to release the race organizers and all persons and groups listed above from any and all liability associated with such competitor's participation in this event to the fullest extent permitted by law.

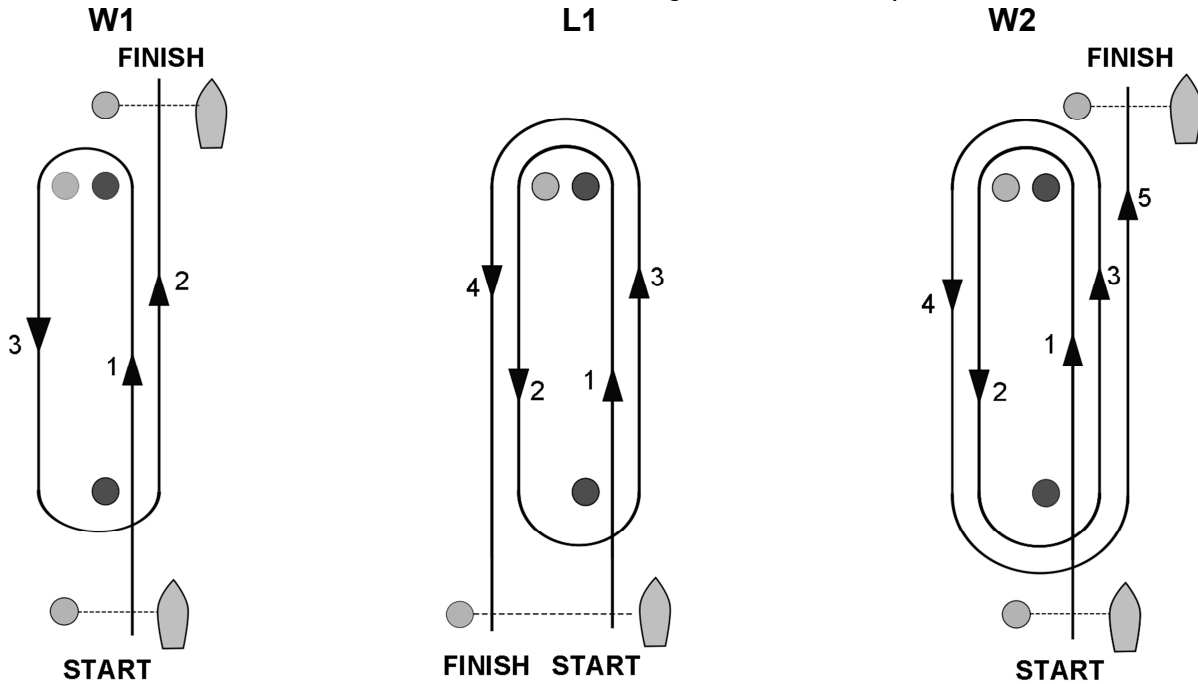
Attachment 1 - RACING AREA

(Chart not to be used for Navigation.)



Attachment 2 – Courses

The courses will be as shown in the diagrams and description below.



For all courses, an offset mark will be set 7 – 10 boat lengths to port of the weather mark.
 For all courses, the leeward mark is not a mark of the course during the first leg of the course.
 For courses "W1" and "W2" the weather mark is not a mark of the course on the last leg of the course.
 For Course "L1" the leeward mark is not a mark of the course on the last leg of the course.

**MANY THANKS TO OUR GENEROUS SPONSORS AND PATRONS
 FOR MAKING NANTUCKET RACE WEEK POSSIBLE AND FOR THEIR
 CONTINUING SUPPORT OF NANTUCKET COMMUNITY SAILING.**