



2011 NRW ONE DESIGN SERIES AUGUST 13, 17, 20, 2011 SAILING INSTRUCTIONS

Sailing Instructions 2011 NRW One Design Series

A Part of Nantucket Race Week
August 13, 17 and 20, 2011

Organized By:

Nantucket Race Week, L.L.C.

And Hosted By: Nantucket Yacht Club (NYC), Great Harbor Yacht Club (GHYC), Nantucket Community Sailing (NCS), and The Nantucket Race Week Committee.

1 RULES

- 1.1 The regatta will be governed by the *rules* as defined in *The Racing Rules of Sailing*.
- 1.2 If there is a conflict between the Notice of Race and these Sailing Instructions, these Sailing Instructions will prevail. This changes rule 63.7.
- 1.3 When flag **Y** is flown from the signal boat prior to the warning signal, in addition to the requirements of rule 40, the penalty for **Marshall Cats** shall be 4 tacks for breaking a rule of Part 2, or 2 tacks for breaking rule 31, and **Marshall Cats** shall not jibe while racing.
- 1.4 The following prescriptions of the US national authority will not apply: Prescriptions to rules 60, 63.2 and 63.4
- 1.5 Part 5, Section B is changed to provide for arbitration of protests of a rule of Part 2.

2 NOTICES TO COMPETITORS

Notices to competitors will be posted on the Official Notice Board located in the main entry hall of Nantucket Yacht Club.

THANK YOU TO OUR SPONSORS



The Inquirer & Mirror



PORSCHE



charles SCHWAB





2011 NRW ONE DESIGN SERIES
AUGUST 13, 17, 20, 2011
SAILING INSTRUCTIONS

3 CHANGES TO SAILING INSTRUCTIONS

- 3.1 Sailing Instructions for Wednesday, August 17, which traditionally involve a Le Mans-type beach start from Coatue, will be announced at the competitors meeting on that day.
- 3.2 Any changes to the sailing instructions will be posted at least 2 hours prior to the affected event(s) or within 15 minutes of the termination of any competitors' meeting.

4 SIGNALS MADE ASHORE

Signals made ashore will be displayed from the flagpole at Nantucket Yacht Club. If a postponement is signaled ashore, '1 minute' is replaced by '60 minutes' in race signal AP.

5 SCHEDULE OF RACES

- 5.1 A competitors' meeting will be held at 1130 on Saturday August 13 and Saturday, August 20 at Nantucket Yacht Club. On Wednesday, August 17 a competitor's meeting will be held at 1230 on First Point on Coatue.
- 5.2 The first warning signal on each day will be at 1300.
- 5.3 Conditions permitting, multiple races will be sailed every race day.

6 CLASS FLAGS

6.1 For the first race, classes will start in the following order using the flags indicated for each class:

Division A	Code	Flag
Alerion	"A"	

Division I	Code	Flag
Indians	"D"	
Rhodes 19	"R"	
Marshall Cats	"M"	

Division II	Code	Flag
Rainbow (Beetle Cat)	"B"	

6.2 Subsequent races for a class will be started as soon as possible after all boats in that class have finished.

7 RACING AREA

The racing area will be one of the three Areas shown on Attachment 1, and will be announced at the competitor's meeting every day.

8 COURSES

- 8.1 The diagrams in the Course Addendum show the courses, including the approximate angles between legs and the order in which marks are to be passed
- 8.2 All marks are rounded to PORT (except course #6), unless designated with an "S."
- 8.3 No later than the warning signal, the race committee will designate the course



2011 NRW ONE DESIGN SERIES

AUGUST 13, 17, 20, 2011
SAILING INSTRUCTIONS

configuration by a number on the course board followed by the marks to be rounded. For non-numbered courses, all marks listed are to be rounded to port, unless signified by an "S" for a starboard rounding.

8.4 The letter "T" following the course number designates **twice around**.

8.5 For Alerions only: When mark "W" is a mark of the course, two Town marks must be properly honored both coming and going:

- 1) Red Nun #8 (our "P") in front of Pocomo Bluff
- 2) Green Can #9 in the cove between Five Fingered Point and Bass Point

If the Town marks are missing, competitors are advised to sail a safe course and avoid the shallow waters

9 MARKS

9.1 Marks may be one of the marks described below:

Mark	Description
A	Government mark, Green Can #13, off Brant Point
E	Red "Town mark" off First Point
G	Green inflatable "tetrahedron" drop mark
M	Red "Town mark" off Second Point
O	Orange inflatable "tetrahedron" drop mark
P	Pocomo red nun, "Town mark"
X	Red and White government bell buoy outside harbor entrance
Y	Yellow inflatable "tetrahedron" drop mark
W	Red Nun #10A in Wauwinet Harbor at the end of Bass Point

9.2 Starting and finishing marks will be orange marks.

10 THE START

10.1 The starting line will be between a staff flying an orange flag on the signal boat and the course side of a nearby mark.

10.2 A boat not starting or starting later than 10 minutes after her starting signal will be scored DNS (Did Not Start), without a hearing. This changes rules 35, 63.1, A4 and A5.

10.3 The race committee will attempt to hail, over VHF channel 72 and/or by voice, the sail numbers of OCS boats after the starting signal. The failure of any boat to hear the hail and the order of such hails shall not be grounds for granting redress. This changes rule 62.1(a).

10.4 Boats whose warning signal has not been made shall avoid the starting area.

11 THE FINISH

11.1 The finish line will be between a staff flying an orange flag on a race committee boat and the course side of the finishing mark.

11.2 After *starting* and before *finishing*, boats are prohibited from sailing through start or finish lines. Boats may not correct this error and will be scored DNF without a hearing. This changes rules 28.1, 63.1, A4 and A5.

12 TIME LIMIT

The time limit for each race will be 90 minutes for the first boat to sail the course and finish. Boats still racing more than 60 minutes after the first boat finishes will be scored DNF,



2011 NRW ONE DESIGN SERIES

AUGUST 13, 17, 20, 2011
SAILING INSTRUCTIONS

without a hearing. This changes rules 35, 63.1, A4 and A5.

13 PROTESTS

- 13.1 Protest forms are available at the Nantucket Yacht Club front desk.
- 13.2 Protests shall be delivered to the Protest Desk within 60 minutes after the race committee's finish boat docks. The protest time limit and a list of protests received will be posted on the notice board.

14 ARBITRATION

- 14.1 For protests involving an alleged breach of a rule of Part 2, a short arbitration hearing will be held prior to a protest hearing except that arbitration will not be available for protests where damage is alleged.
- 14.2 One representative from each boat will meet with an arbitrator unless the protestor requests that the protest be withdrawn. No witnesses will be allowed. Protests not resolved by arbitration will be forwarded to the protest committee.
- 14.3 The arbitrator will not be a member of the protest committee that hears the protest but will be permitted to observe the testimony given to the protest committee and offer testimony. This changes rule 63.3(a).
- 14.4 Rule 63.1 is changed by adding: "The arbitrator may allow a protest to be withdrawn on behalf of the Protest Committee."

15 SCORING

- 15.1 The Low Point System of Appendix A will be used to calculate daily and series scores, including rule A9 for the Series.
- 15.2 When fewer than 5 races are completed, a boat's series score will be the total of her race scores. When 5 or more races are completed, a boat's series score will be the total of her race scores, excluding her worst score. When 9 races are completed, a boat's score will be the total of her race scores excluding her worst two scores. When 10 races are completed, a boat's score will be the total of her race scores excluding her worst three scores.
- 15.3 One completed race shall constitute a series.

16 SAFETY REGULATIONS

- 16.1 All boats are requested to check-in with the race committee before the start of the first race each day by sailing past the signal boat on starboard tack and hailing their class and sail number, and receiving confirmation from the race committee.
- 16.2 A boat that retires from the racing area shall notify the race committee as soon as possible.
- 16.3 All boats shall carry 8 lbs of anchor and chain and 50' of line, a 3 gallon (or larger) bucket and paddle. Participants are also reminded that the US Coast Guard requires a wearable PFD for all crew and an "efficient sound making device" (generally a whistle or air horn). Boats 16' or longer must also carry a Type IV throwable device.
- 16.4 Boats may be checked at any time for the safety equipment. Any boat found to be missing any required safety equipment will be disqualified from all races that day

17 RADIO COMMUNICATIONS

- 17.1 The race committee will use VHF channel 72 to communicate with competitors.
- 17.2 The race committee may use VHF channel 72 or other channels for working



2011 NRW ONE DESIGN SERIES

AUGUST 13, 17, 20, 2011
SAILING INSTRUCTIONS

communications. Boats may monitor, but are advised that the race committee communications are unofficial and the use, or lack thereof, of radio communications shall not be grounds for granting redress.

17.3 Except in an emergency, a boat shall neither make radio transmissions while racing nor receive radio communications not available to all boats. This restriction also applies to mobile telephones.

18 INSURANCE

Each participating boat shall be insured with adequate third-party liability insurance.

19 OFFICIAL BOATS

Official boats will be flying black Nantucket Race Week flags.

20 CLEAN REGATTA

Nantucket Race Week is committed to maintaining Nantucket's clean waters and shores. As such Nantucket Race Week is registered in the Sailors for the Sea's Clean Regattas program. All NRW participants are encouraged to follow the goals and requirements of Clean Regattas.

The requirements include:

- No discharge of treated or untreated sewage or black water in harbor areas or no-discharge zones around Nantucket.
- No overboard discharge of trash or littering at shore facilities (e.g., rigging tape, cigarette butts, beer cans).
- Follow Nantucket's trash and recycling guidelines: Trash must be in clear plastic or biodegradable bags.
- All paper, glass, metal, and plastic must be recycled and placed in separate containers.
- Reduce plastic waste by using refillable water bottles.
- Use green cleaning and maintenance products.
- Reduce the impact of oil spills from motorized vessels by carrying at least one bilge sponge and fuel spill pad.

21 DISCLAIMER OF LIABILITY

Sailing is an activity that has an inherent risk of damage and injury. Competitors in this event are participating entirely at their own risk. See Rule 4, Decision to Race. The race organizers, Nantucket Race Week LLC, the Nantucket Yacht Club, Great Harbor Yacht Club, Nantucket Community Sailing, race committee, protest committee, volunteers, sponsors, agents, employees, or any other organization or official providing services at the request of any of the foregoing in connection with the events will not be responsible for damage to any boat or other property or the injury to any person sustained as a result of participation in this event. By participating in this event, each competitor (owners, skippers, and crews) agrees to release the race organizers and all persons and groups listed above from any and all liability associated with such competitor's participation in this event to the fullest extent permitted by law.

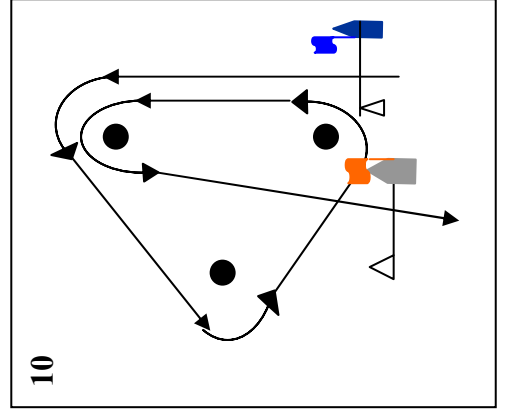
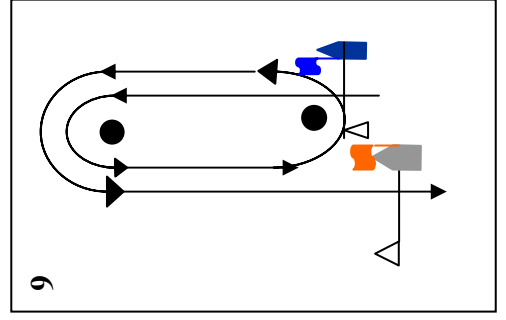
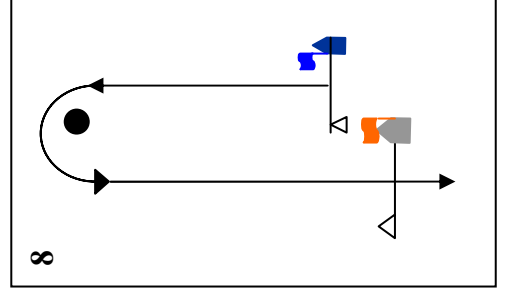
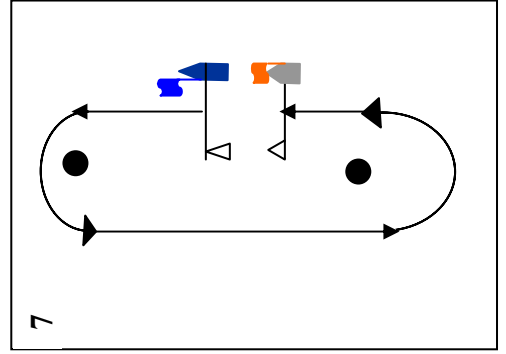
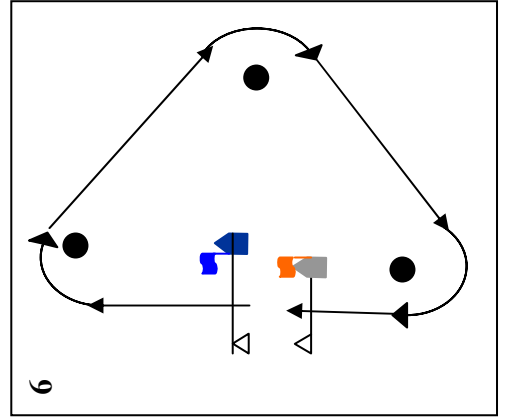
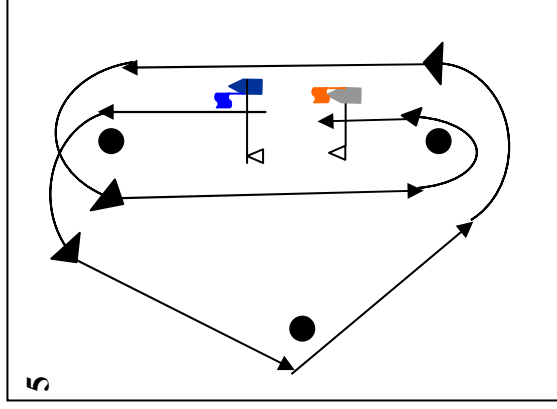
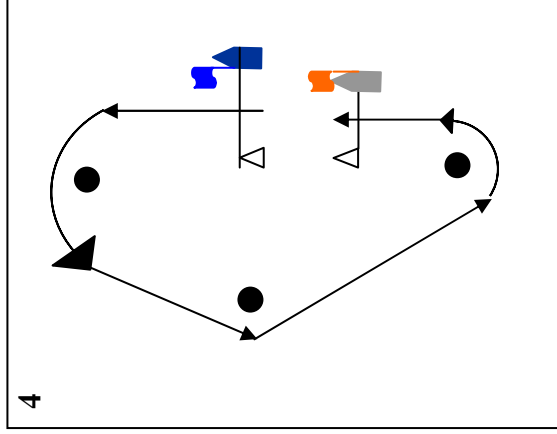
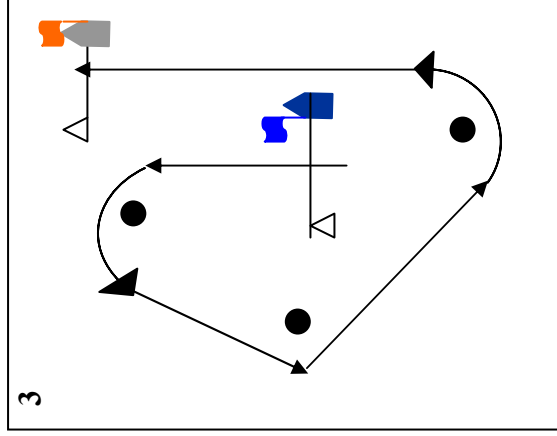
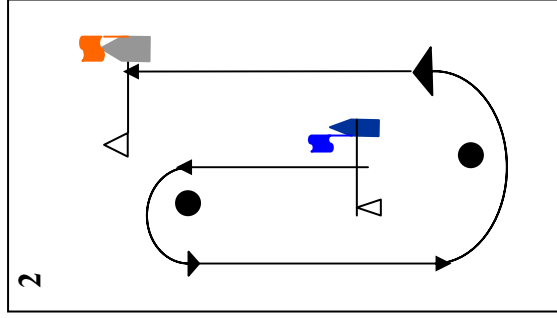
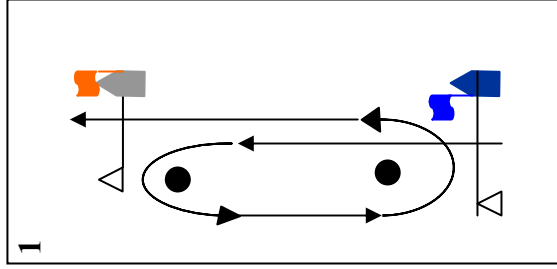
NANTUCKET YACHT CLUB 2011 ONE DESIGN COURSE ADDENDUM

Courses will be shown on the course board located near the stern of the NYC Signal Boat

The letter "T" following the course number designates *twice around*

All marks are to PORT (except course #6) unless designated with an "S"

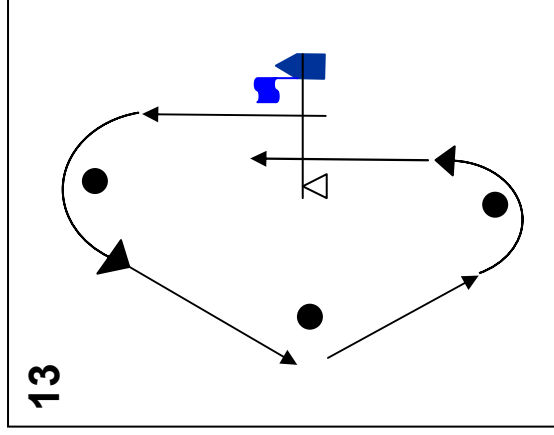
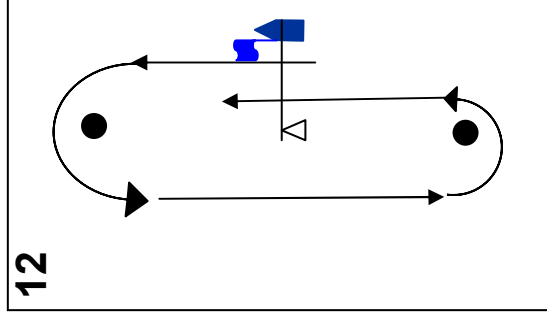
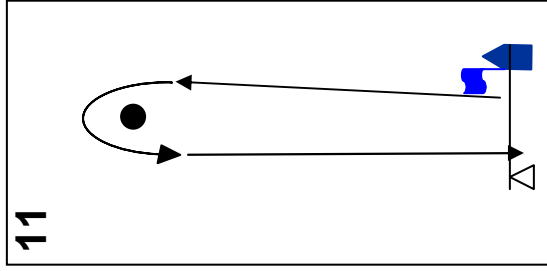
Unless starting or finishing, boats crossing the start line or finish line will be scored DNF for that race



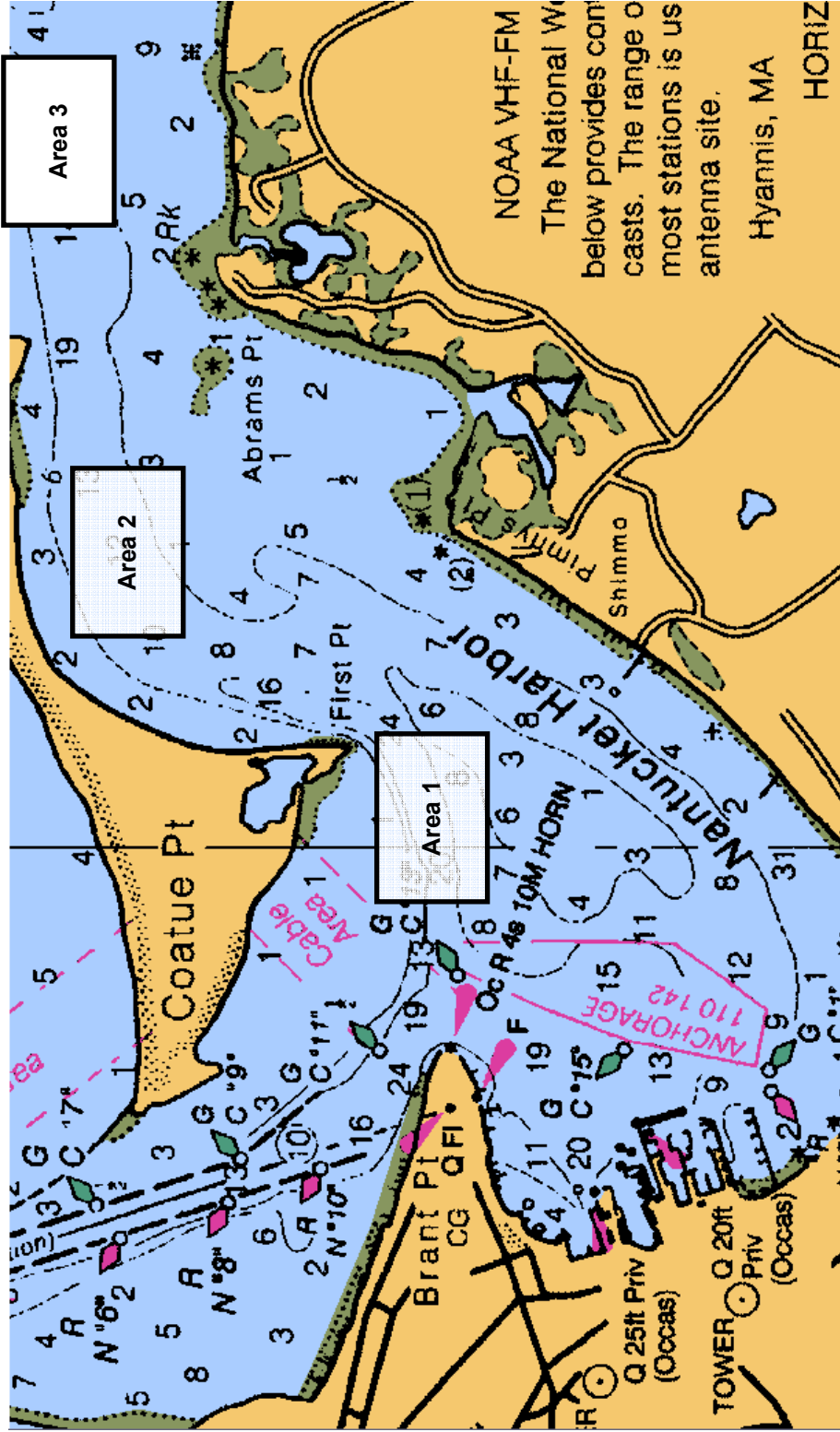
NANTUCKET YACHT CLUB

2011 RAINBOW COURSE ADDENDUM

Courses will be shown on the course board located near the stern of the NYC Signal Boat
Unless starting or finishing, boats crossing the start line or finish line will be scored DNF for that race



Attachment 1 – Course Areas



NOAA VHF-FM
 The National Weather Service provides continuous weather forecasts. The range of most stations is within 100 miles of the antenna site.
 Hyannis, MA
 HORIZ